

SUPER-FINISH BORING TOOLS

FOR SINGLE-POINT BORING HEADS

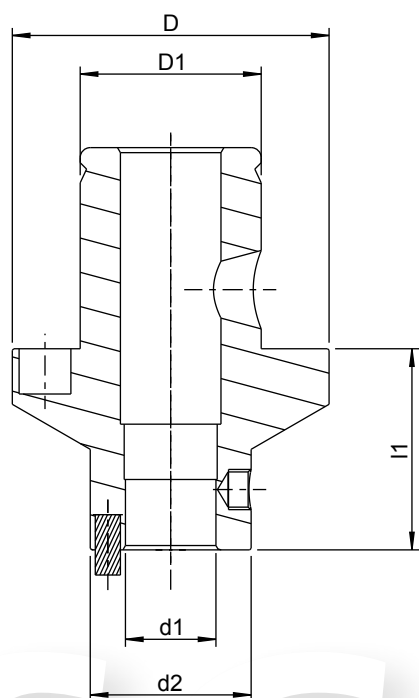
Specifications

Boring range A (mm)	s Ø	Order No. Holder	indexing plate	Order No. Boring inserts HSS
24 – 30 29 – 37	6	WPH 680	CCMT 0602 . .	HSS 619
36 – 46 45 – 58	8	WPH 880	CCMT 0602 . .	HSS 826
57 – 76 72 – 108	10	WPH 1080	CCMT 0602 . .	HSS 1038
95 – 135 105 – 200	16	WPH 1680	CCMT 09 T 30 . .	HSS 1650

REDUCTIONS

Use

for reception of smaller tools on larger shanks and extensions.



Specifications

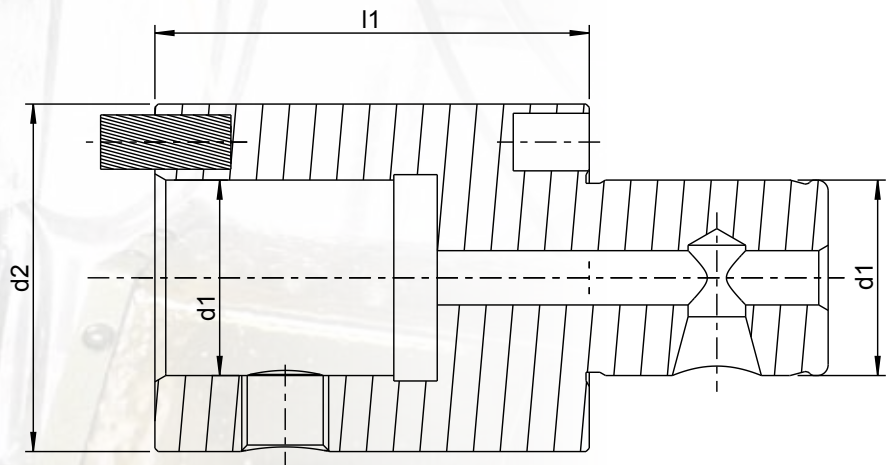
Order No.	D	D ₁	d ₁	d ₂	l ₁
R 2811	50	28	11	20	40
R 2814	50	28	14	25	40
R 2818	50	28	18	32	40
R 2822	50	28	22	40	40
R 3611	63	36	11	20	40
R 3614	63	36	14	25	40
R 3618	63	36	18	32	40
R 3622	63	36	22	40	40
R 3628	63	36	28	50	40

We also produce reductions for combining with other tool systems. Please ask.

EXTENSIONS

Use

for extension of shanks, to work lower holes.



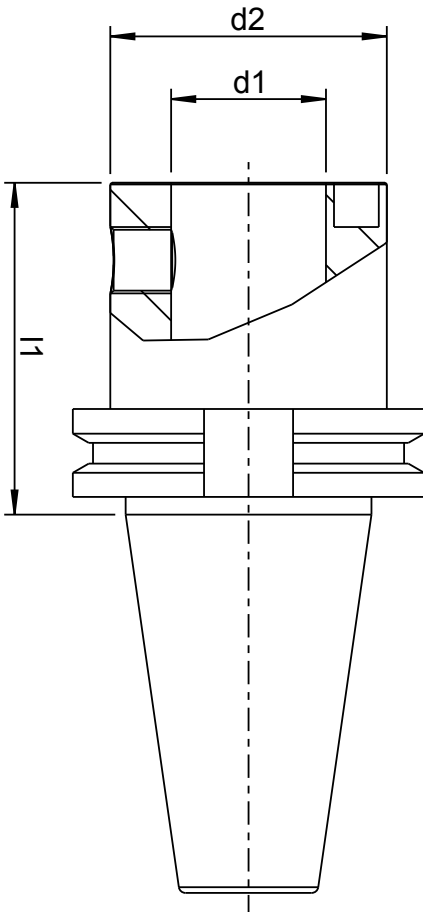
Specifications

Order No.	d_2	d_1	l_1
V 1140	20	11	40
V 1440	25	14	40
V 1460	25	14	60
V 1840	32	18	40
V 1860	32	18	60
V2240	40	22	40
V 2260	40	22	60
V 2280	40	22	80
V 2840	50	28	40
V 2860	50	28	60
V 2880	50	28	80
V 3660	63	36	60
V 3680	63	36	80
V 36100	63	36	100

We also produce larger as well as extensions for combining with other tool systems. Please ask.

SHANKS

DIN 69871 A and B
MAS BT ; ANSI/CAT ; HSK



Specifications

Order No.	Cone	d_1	d_2	l_1
SK 40 011 060	SK 40 G = M 16	11	20	60
SK 40 014 060		14	25	60
SK 40 018 060		18	32	60
SK 40 022 060		22	40	60
SK 40 028 060		28	50	60
SK 40 036 065		36	63	65
SK 50 011 060	SK 50 G = M 24	11	20	60
SK 50 014 060		14	25	60
SK 50 018 060		18	32	60
SK 50 022 060		22	40	60
SK 50 028 060		28	50	60
SK 50 036 065		36	63	65
SK 50 136 065		36	80	65

The protruding length l_1 is too with other length available. $l_1 = 40$ or $l_1 = 80$.

Extensions or reductions can be used for each larger depths.

Please indicate the exact shank execution in case of order, e.g. SK 40 011 060 - MAS BT.

System shanks also as HSK-Shanks in different size.

