

PRECISION BORING HEAD ES 350

FOR MODULAR TOOL SYSTEM

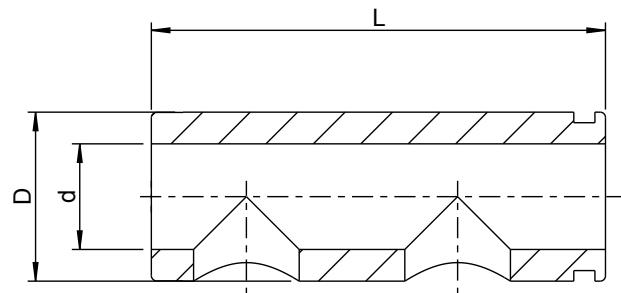
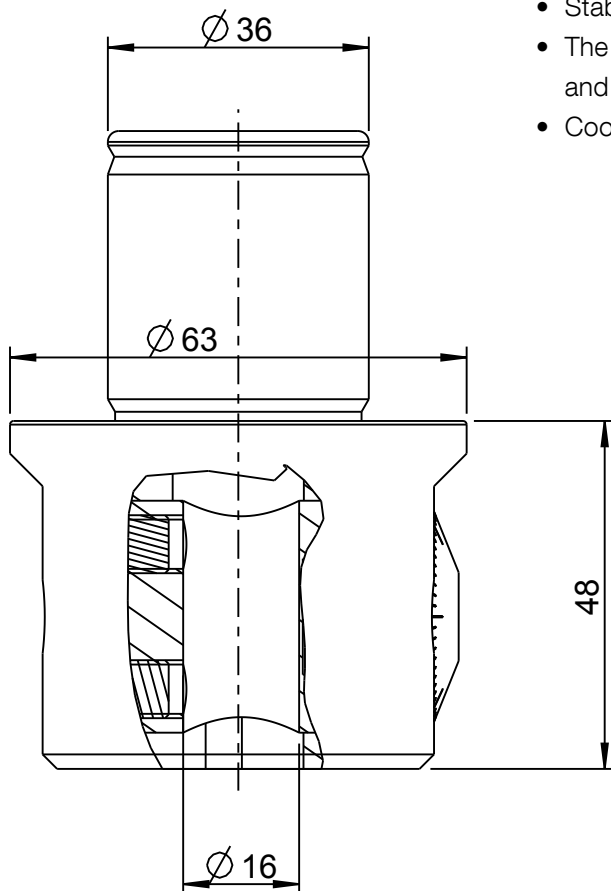
Ø 3 mm to Ø 50 mm

Order No. ES 350-36

Fine feed 0,005 = 0,01 mm/Ø

Facts

- Fine adjustment using a ground micrometer spindle chromeplated easy-to-read scale.
- Feed accuracy 0,005 mm, 1 graduation = 0,01 mm Ø.
- Boring bit mounting Ø 16 H7 runs all through the tool slide, in order to move long boring bits axially inside the tool.
- Symmetrical tool design ensures very low unbalance.
- All parts are hardened and fine-ground.
- The cutting edge setting aligned in relation to the adjustment axis can be reproduced using the contact face provided on the boring bit.
- Stable clamping of the boring bits by two grub screws.
- The boring range of Ø 3–50 mm is achieved using various boring bits and boring bars.
- Coolant supply through the head.



Reducing bushes

Order No.	D	d	L
35016-6	16	6	43
35016-8	16	8	43
35016-10	16	10	43
35016-12	16	12	43